

CHSC

Container Handling Systems Corporation



Bulk Depalletizing Equipment

WE HANDLE A WORLD OF CONTAINERS

Bulk Depalletizer

Model No. 450(AC)-60

Features:

1 Hoist Bin

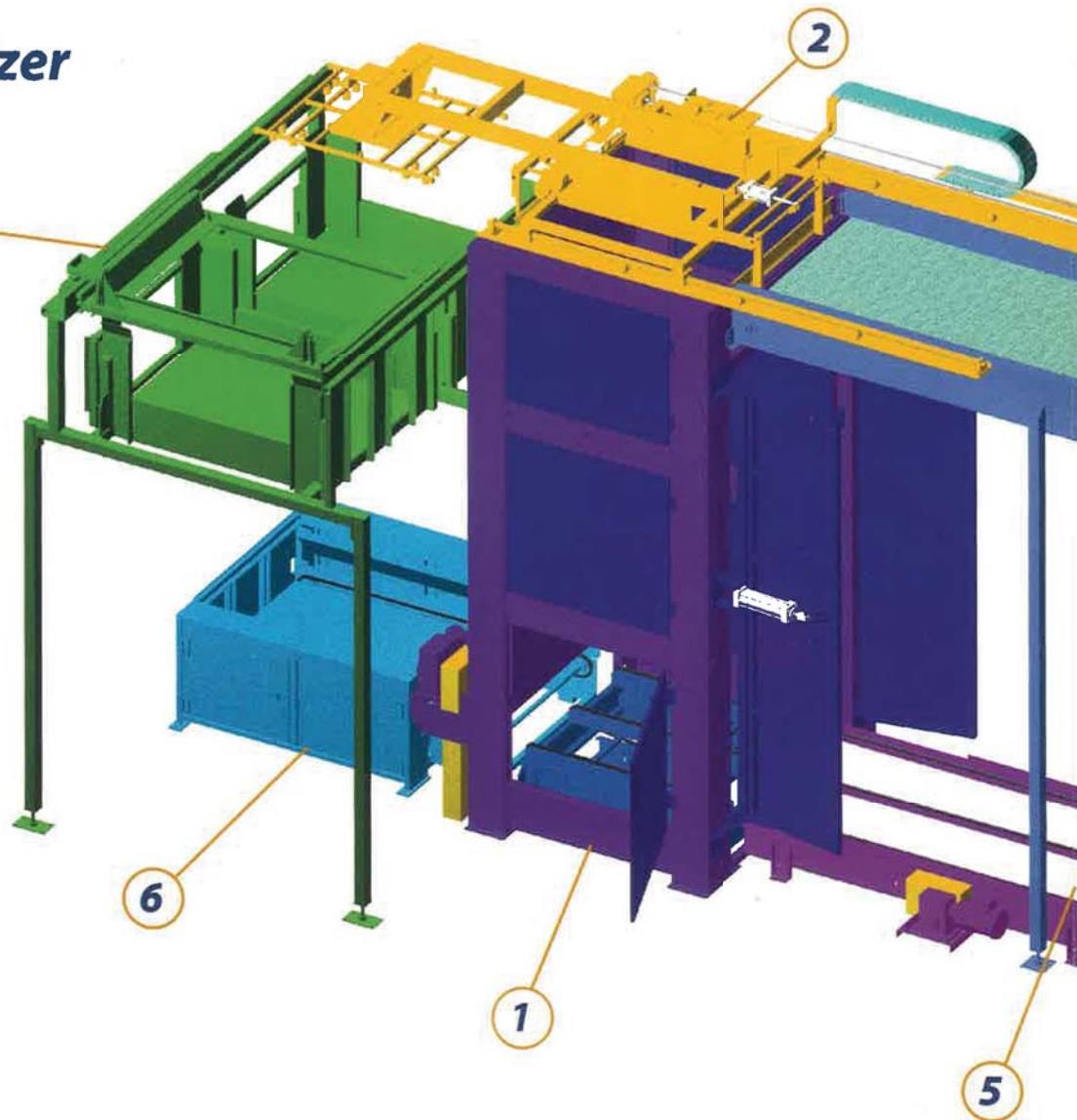
- Pneumatic squaring shrouds
- Hoist bin doors
- Four point pallet lift with individual adjusting points and individual heavy-duty lift chain take-up assemblies
- Pallet lift with cam followers that ride on continuous guide bars
- Fixed pallet stop built into the pallet lift
- Main drive with mechanical over load protection, air brake and variable speed electrical drive system
- Complete access to internal workings with hinged outer doors

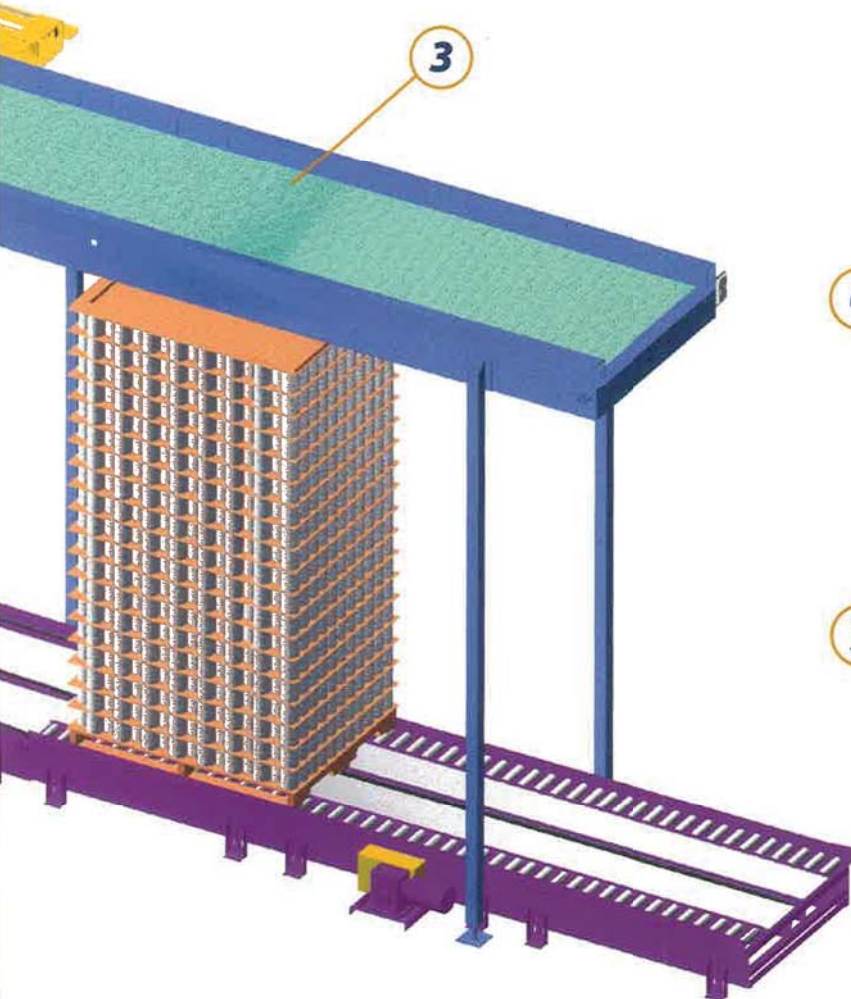
2 Sweep Assembly

- Supported with linear shafts and bearings, drive with mechanical over load protection, air brake and variable speed electrical drive system for four to five sweeps per minute
- Pneumatic front layer retainer bar with a rear compression back bar
- Vacuum chipboard and picture frame removal assembly
- Chipboard grippers with reciprocating jaws from a dual cylinder arrangement

3 Container Accumulation Table

- Low friction plastic belting with anti-static panels
- UHMW wear strips and serpentine return ways
- Drive motor with electrical variable speed drive
- Guide rails with UHMW covering with internal adjusting assemblies for an obstruction free surface for the operator





4 Dunnage Collection Systems

- Standard single common hopper or dual hoppers for chipboard and picture frames, all with hinged doors for dunnage removal, stacked on pallets
- Dunnage storage overload control
- Sweep protection inhibiting control for dunnage removal

5 Full Pallet Conveyors

- Roller chain on replaceable wear strips with side guides, center drive and take-up for reversing operation, drive motor with reverse direction and accel/decel features
- Air chain accumulator, centered single heavy duty roller chain with roller conveyor each side, pneumatic accumulator zone raises and lowers roller chain, single drive motor with reverse direction and accel/decel features
- Full pallet conveyor with aluminum diamond plate decking and enclosed photoelectric controls

6 Empty Pallet Stacker

- Pneumatic pallet lift with a heavy duty air bag, gravity operated pallet supports capable of stacking 12 to 16 pallets, drive motor for empty pallet conveyor, complete access to internal workings with hinged outer doors
- Remote operator station
- Pallet storage overload control

7 Control Panel and Wiring (not shown)

- NEMA-12 main control panel with factory made harness to main junction box (panel to be within 48" of junction box)
- Allen Bradley SLC-5/04 processor
- Allen Bradley color Panel View 1000 operator screen, mounted on swivel
- Allen Bradley Power Flex 70 VFD drive for hoist bin
- Allen Bradley Power Flex 4 VFD drive for sweep
- Allen Bradley Power Flex 4 VFD drives for full pallet conveyors, container accumulation table and optional discharge systems
- All positioning controls are AB 30mm non-contact proximity controls
- All pallet conveyors have AB photo electric controls mounted in heavy duty enclosures
- Auto height control is a non-contact AB photoelectric control system with three programmed container heights as standard
- Machine is completely pre-wired and tested prior to shipping, all rigid conduit and NEMA-12 junction boxes

(Note: Specifications are subject to change without notice.)

About Container Handling Systems Corporation

Container Handling Systems Corporation's start in manufacturing bulk palletizing and depalletizing equipment began in 1978, six years after starting in the container conveying manufacturing industry. With our comprehensive container conveying product lines that are found in most markets, our machine designs benefited by being introduced to the newest container technology that was in these various markets.

Our machines, along with variable integrated infeed and discharge systems, have helped pioneer specialized container equipment and systems to meet the most demanding circumstances. Engineering and manufacturing incorporates the use of our numerically controlled equipment to provide the highest quality and uniformity within each unique application.

The CHSC depalletizers are all electrical and pneumatic operated. The machine operates with electrical variable speed controls on all motors and has regulated pneumatic components to assure the smoothest and fastest operation for the most difficult container. Whether the application calls for a semi-automatic machine or demands a completely fully automatic machine a CHSC depalletizer will fit the application. Custom designs for particular containers are available through our design-engineering department. Each machine has a wide range of machine layouts that can fit into most customer facilities.

CHSC depalletizing equipment can be found in the canning, dairy, food processing, meat packaging, beverage, pet food, petrol chemical packaging and container manufacturing industries. By furnishing integrated discharge systems, CHSC has constantly upgraded mechanical designs and electrical control systems to efficiently handle each container from palletized loads at the infeed to the single filer at the discharge. Designs to handle containers from one market can be incorporated into a machine for another market to customize each order, if necessary. The result is that each machine is a complete finished product to efficiently depalletize your particular container.

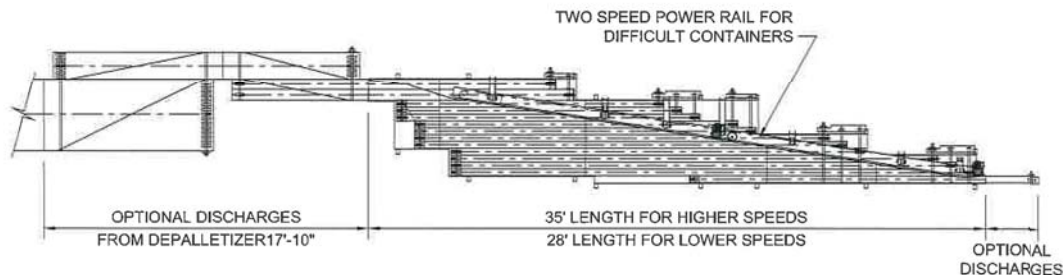
When designing a complete depalletizing system, CHSC can handle the entire project. In addition to depalletizing and discharge equipment, our services include site engineering, pallet infeed systems, integrated control systems, container delivery conveyor systems, field installations and service.

Whether you are considering a replacement machine or a major line expansion, CHSC is dedicated to providing depalletizing equipment designed and manufactured to deliver reliable performance for each situation. We are staffed to provide complete field technical support with each machine for start-up and plant training. Complete documentation, manuals, spare parts and as-built line layouts are provided at the close of each project.

CHSC will support your needs from the beginning of your project to the completion with our facility and field staffs and that means—your containers will continue to flow on time.

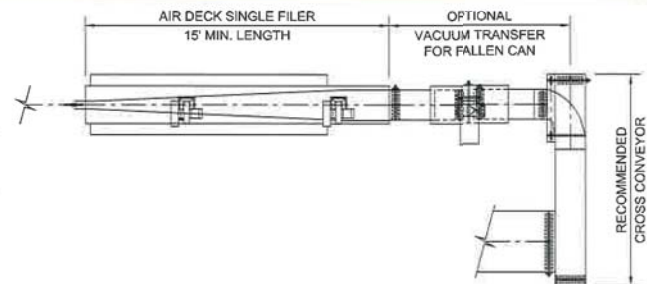
Integrated Discharge Systems:

CHSC specializes in engineering and manufacturing integrated discharge systems to single-file your container. No matter what material, shape or speed the container is, CHSC has a single filer that fits your application. Using customer requirements and specifications, the discharge system can be fully integrated, and pre-wired, from the depalletizer to the down stream conveying system. CHSC has a team of application engineers to design and manufacture the proper discharge for each type of container to any customer request or specification.

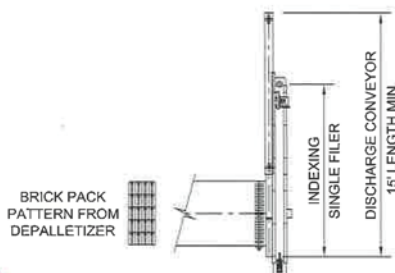


Pressure less single filers for lightweight or irregular shaped containers at higher speeds. Used on all applications and containers including non-round or irregular shaped glass. Ideal with plastic beverage containers and glass containers at hi-speeds. This style of single filer is available in two sizes for hi-speed (as illustrated) and a smaller version for slower speeds. Optional equipment such as a powered combining rail to stabilize difficult containers and a tilt bed frame to assist in combining are available. An integrated multiple speed control system for this style of single filing is recommended.

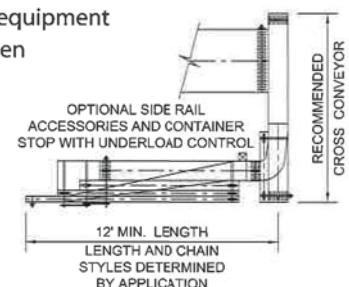
Air deck single filers for metal round containers at higher line speeds. An efficient method of single filing aluminum beverage cans and standard size food cans at high speeds. Fan blowers provide a cushion of air between the containers as well as a directional force to move the containers with minimal pressure, avoiding pressure jams at the merge point. A vacuum transfer is usually part of this system to remove fallen cans prior to the single filing area.



"Stripper" continuous motion indexing discharge for non-round containers (other than glass). An efficient and cost effective method to single file non-round containers that have been palletized in rows (brick pack). This style of single filer is usually integrated to the sweep of the depalletizer to maintain the orientation of the rows. The single filer is available to operate with multiple size containers.



Pressure style single filers for rigid round containers at slower line speeds. Specifically designed to be mounted directly off the depalletizer or with a cross conveyor to allow operator access. This style of single filer is manufactured in various sizes, lengths and optional equipment (i.e. combiner rails, fallen container knock out rails, etc.) to optimize its performance.



Technical Specifications:

Standard Machine Specifications

Power requirements: 3ph x 60 x 230/460v. @ 30 amps,
single point drop

Air requirements: 8 to 10 cfm @ 80 psi, single point drop

Control voltage: 24 vdc

Speed of sweep: 4 to 5 sweeps per minute

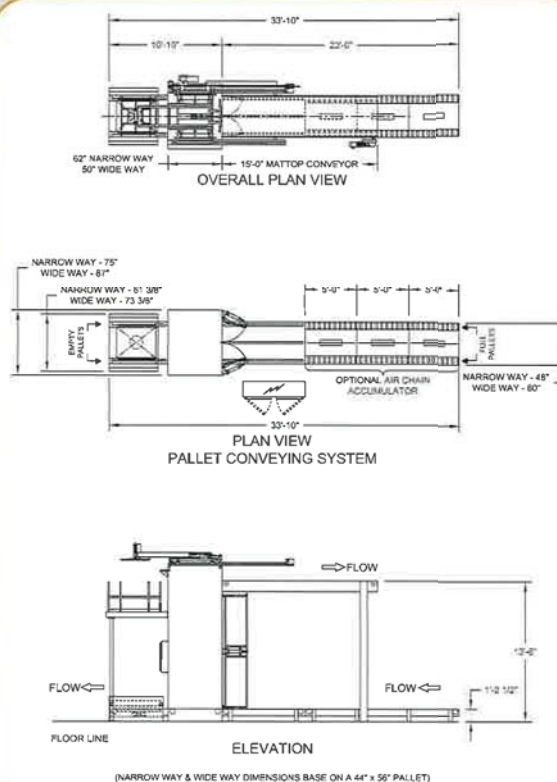
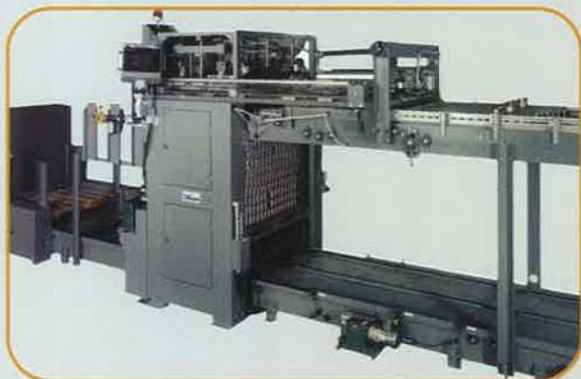
Pallet size: standard container pallet, 44" x 56" four
way (wood or plastic), chipboards (wood or
plastic), picture frames (wood or plastic)

Color: enamel machine gray

Common Available Options

- Full pallet turntable conveyor
- Full pallet right angle pop-up transfers
- Dunnage collating system with separate hoppers
- Offset high capacity dunnage collection hopper
- Pass through pallet staker to store multiple stacks of pallets
- Offset layer squaring device mounted inside of sweep
- Top layer squaring assembly mounted inside of hoist bin
- Enhanced closed loop sweep drive for 6 to 7 sweeps per minute
- Other PLC platforms than the standard AB SLC-5/04
- Device net control systems
- Machine diagnostics, also downstream conveyor systems

Note: Other options are available not listed above, i.e. pallet sizes, speeds, colors or specific customer specifications that can be included by request.



Other bulk palletized equipment manufactured by CHSC

- Manufacture of high level and low level bulk palletizers and depalletizers
- Empty container palletizers
- Empty container combination palletizer/depalletizer
- Full container palletizers - depalletizers, combination palletizer/depalletizer
- Magnetic head palletizer - depalletizer, combination palletizer/depalletizer
- Pallet conveyor systems
- Pallet air chain accumulators and trailer unloading systems